



SOUNDBOARD

acoustic wood fiber panels



ceiling



wall



baffles



design solutions

[DECOUSTIC.ORG](https://decooustic.org)



High-quality Soundboard panels of Russian production allow you to create modern urban interiors with good acoustics. It is a great choice for walls and ceilings of all types of buildings. Panels made of pressed wood fiber have recently gained wide popularity as a material for acoustic finishing, and they really have a number of advantages.

SoundBoard panels contain absolutely natural components, like wood fiber, white cement and water. Cement mix covers fibers and binds them to make a solid panel.

Thanks to the optimum density and thickness of the decorative acoustic panels SoundBoard have excellent design characteristics and resistant to strong mechanical stress, but at the same time they have a well-blown structure, providing high sound-absorbing properties.



moisture resistance



high mechanical strength and anti-ricochet properties



high acoustic characteristics



fire safety



eco-friendly



durability and maintainability



climate control inside the room



can be painted in any color "before" and "after" installation

Size range

Standard size acoustic panels SoundBoard:

	Length, mm	Width, mm	Thickness, mm
Wall panel	2400/1200/600	600	20/15
Ceiling panel	1194/594	594	15

The thickness of the panels 20/15 mm depends on the required strength and acoustic characteristics, architectural solutions.

Under the order panels of non-standard can be made sizes and configurations.

End edges



Edge AKE



Edge ASK5



Edge AK



Edge PK

The most popular type



Edge K5

References



Sports objects



Rehearsal base



Studios



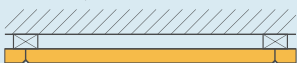
Offices



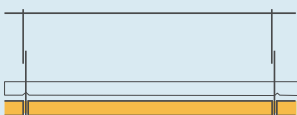
Cinemas

Installation

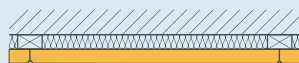
Mount On walls and ceilings with a space of 50 mm



Ceiling mount on the frame of the T-profile with indent



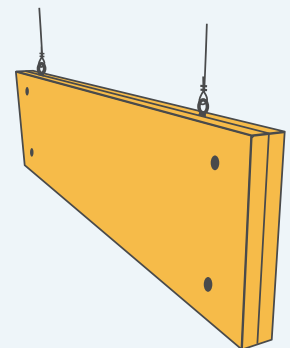
Mounting on walls and ceilings with a space of 50 mm with acoustic wool slabs «Shumanet Eco»



Ceiling mount on the frame of the T-profile with indent and acoustic wool slabs «Shumanet Eco»



Buffle Suspension System
Cable harness





Acclimatization

SoundBoard panels consist of natural materials: wood fiber and cement, in this regard, there may be slight differences between the panels.

Before installation the panel SoundBoard is necessary to remove the original packaging and allow them to acclimatize from 4 to 7 days in the finished room. Acclimatization conditions should not differ from the operating conditions of the premises.



Painting

Painting of soundboard panels is carried out at help air gun (spray gun) at a pressure of about 4.5 ATM.

It is necessary to use only water-based paints!

In the case of installation in wet areas, the paint should be water-resistant.

Before painting the panels must be cleaned of dust. The paint is applied to the primed side of the panel. First of all, the ends of the panels are painted.

Not allowed packaging, transportation and use of not dried product to prevent damage to the painted surface.

Storage



50±5% RF
23±2° C