

APPROVED BY
General Director of Acoustic Group
/Signed/ I.L. Livshits
July 17, 2023

**Typical Method Statement for Design of 50/75/100 mm Single
Frame Soundproofing Partitions (AG.W-101/AG.W-102/AG.W-
103/AG.W-104/AG.W-108)**

TK-001-2023

Revision 2

DEVELOPED BY
Lead Acoustic Engineer
Acoustic Group, LLC

/Signed/ D.A. Shmakov
July 17, 2023

Table of Contents

1. General Design Specifications	3
2. Scope of application.....	4
3. Transportation and Storage	5
4. Structural solutions for 50/75/100 mm single-frame soundproofing partitions.....	6
5. Installation technology	10
6. Allowable loads when mounting items on the 50/75/100 mm single-frame soundproofing partition structure	16
7. Hand tools	17
8. Workmanship.....	18
9. Finishing the structure surfaces using gypsum boards	21
10. Material and technical resources.....	22
11. The need for personal protective equipment and overalls for installation of the framed soundproofing partition	23
12. Safety precautions	23
13. Basic fire safety instructions.....	23

					<i>TK-001-2023</i>						
					<i>Typical Method Statement for Design of 50/75/100 mm Single Frame Soundproofing Partitions (AG.W-101/AG.W-102/AG.W-103/AG.W-104/AG.W-108)</i>	<i>Letter</i>		<i>Weigh</i>		<i>Scale</i>	
<i>Rev.</i>	<i>Sheet</i>	<i>Doc. No.</i>	<i>Sign.</i>	<i>Date</i>							
<i>Developed by</i>	<i>D.A. Shmakov</i>		<i>/Signed/</i>	<i>22.05.2023</i>							
<i>Chkd by</i>	<i>I.L. Livshits</i>		<i>/Signed/</i>	<i>22.05.2023</i>							
<i>Tech. Ctrl.</i>											
<i>Reg. Doc. Ctrl.</i>						<i>Sheet 2</i>		<i>Total Sheets 24</i>			
<i>Approved by</i>	<i>I.L. Livshits</i>		<i>/Signed/</i>	<i>22.05.2023</i>							

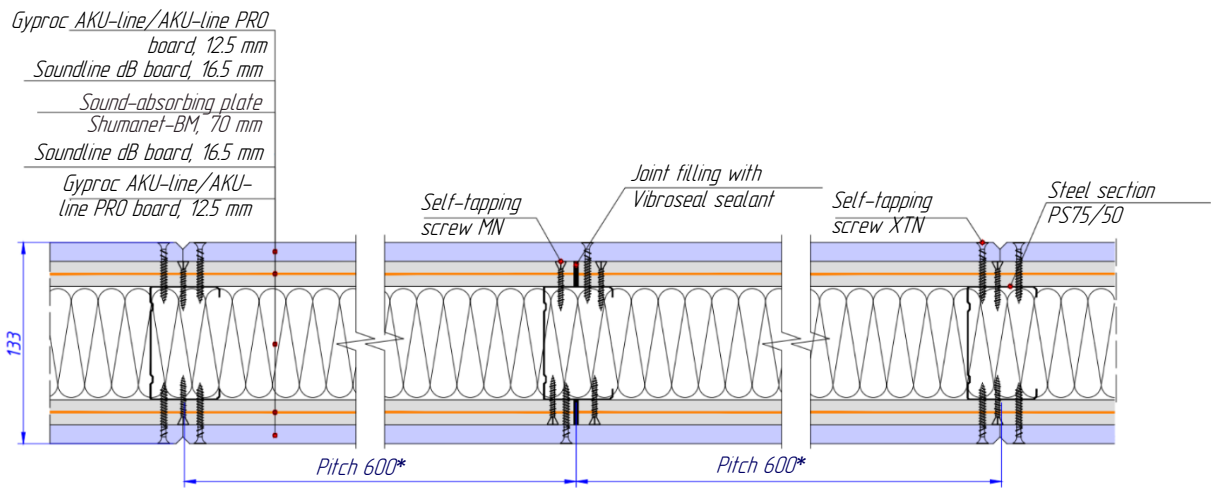


Figure 3. Soundproofing framed partition structure on PS 75/50 (AG.W-102) steel section.

Figure 4. Soundproofing framed partition structure on PS 100/50 (AG.W-103) steel section.

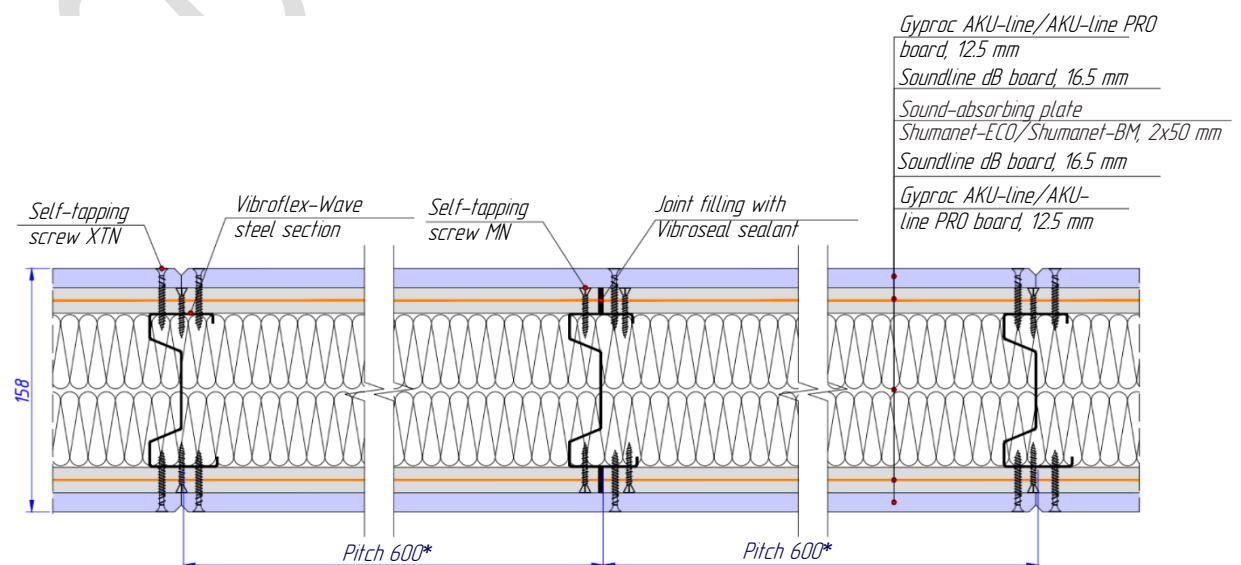
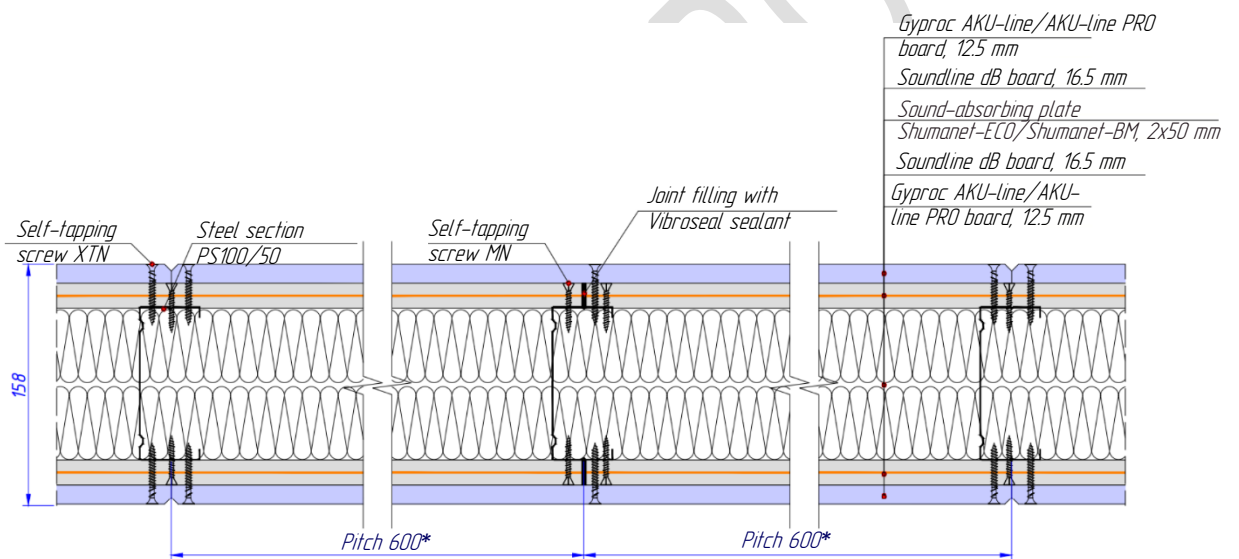


Figure 5. Soundproofing framed partition structure on Vibroflex-Wave (AG.W-104) steel section.

									Sheet
Rev.	Sheet	Doc. No.	Sign.	Date					7

TK-001-2023

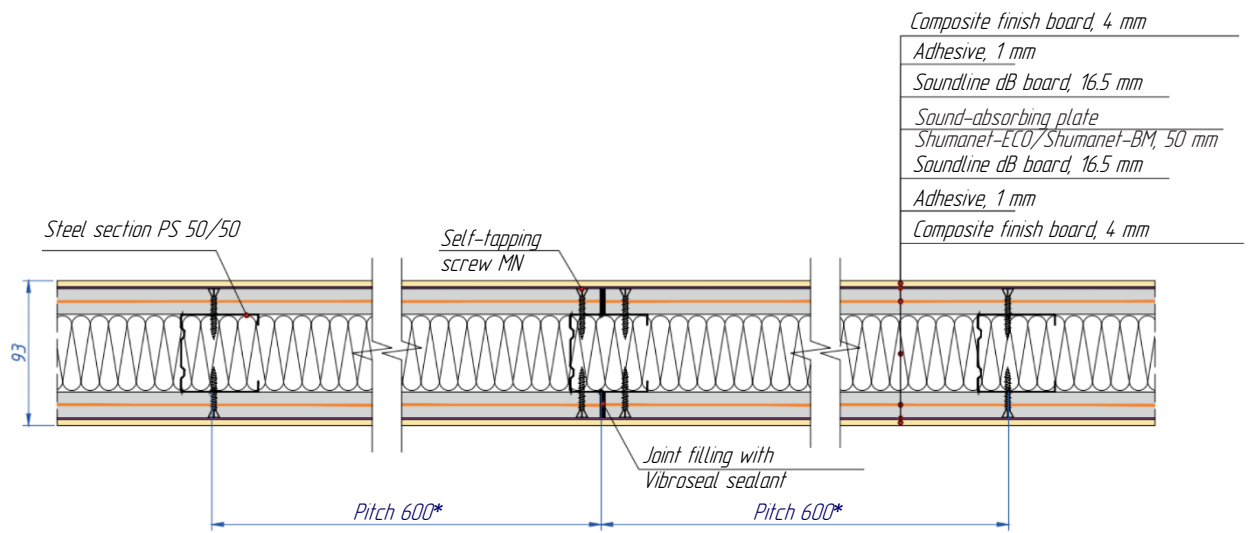


Figure 6. Soundproofing framed partition structure of dB-X AL (AG.W-108) system.

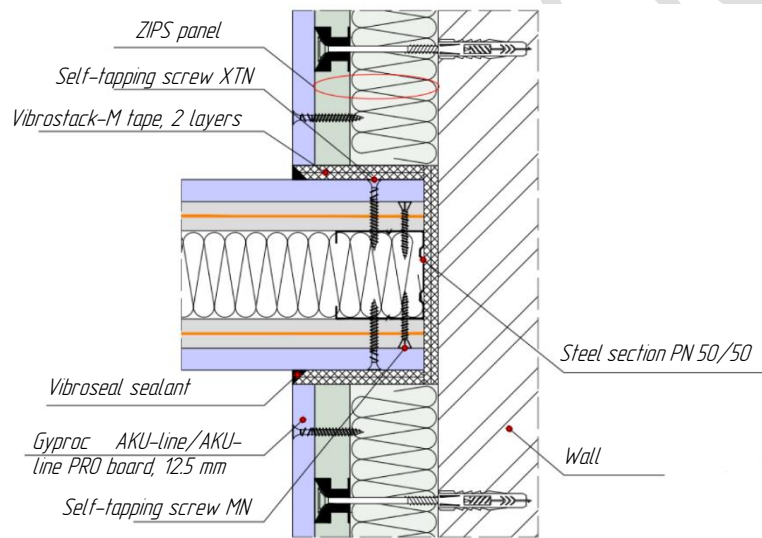
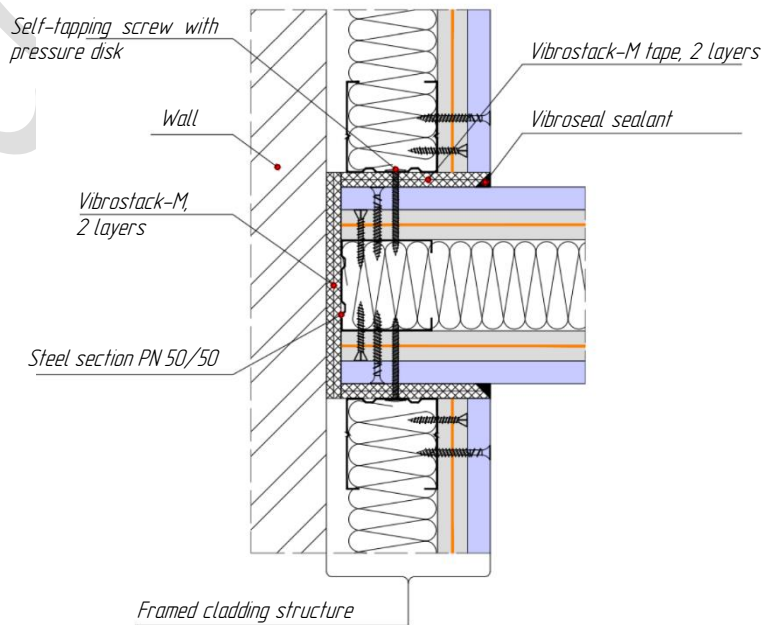


Figure 7. Connection of ZIPS panel system to single-frame soundproofing partition.



									Sheet
Rev.	Sheet	Doc. No.	Sign.	Date					8

TK-001-2023

Figure 8. Connection of soundproofing cladding to single-frame soundproofing partition.

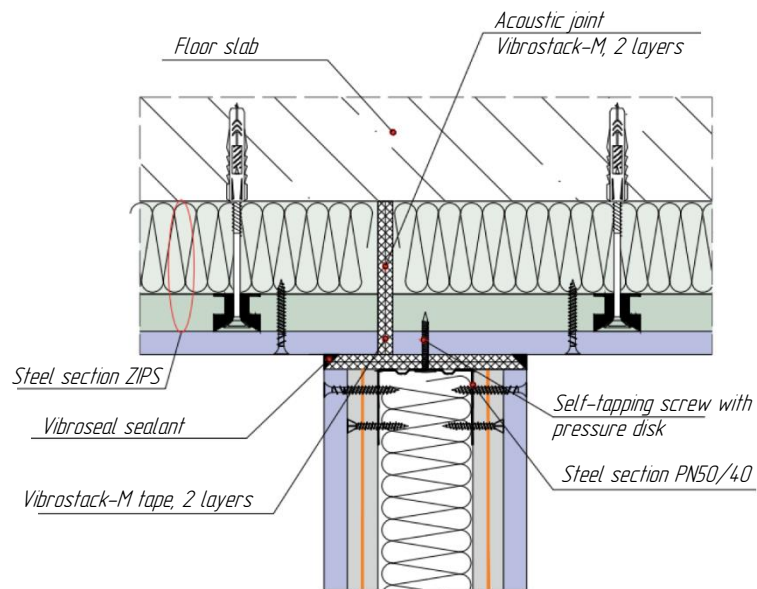


Figure 9. Connection of single-frame soundproofing partition to ZIPS panel system on a floor slab.

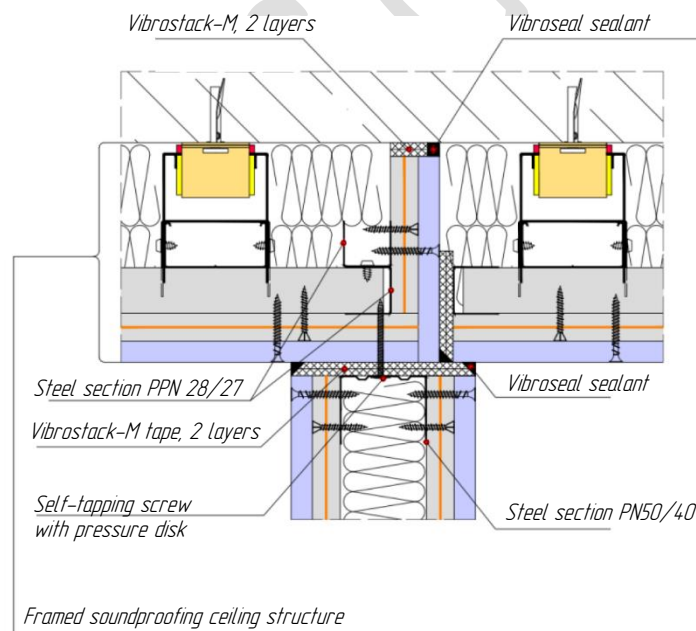
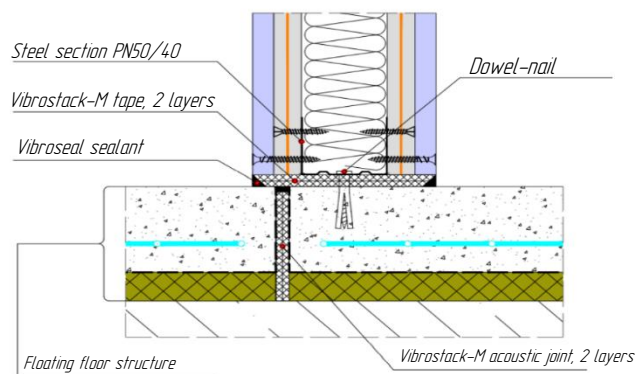


Figure 11. Connection of single-frame soundproofing partition to floating floor structure.



high temperature and humidity conditions, use a special adhesive to bind tiles on waterproofing mastics. The adhesive is applied with a toothed spatula.

9.14. It is recommended to seal the joints between tiles using special joint fillers, and with joints between the walls and between the walls and floor shall be sealed with sealants.

9.15. As for soundproofing, it is recommended to cover joints along the perimeter of the structure with finish elements (corners, skirting boards, etc.) not making rigid joints between two adjoining structures (existing and soundproofing).

10. Material and technical resources

10.1. The necessary basic materials per 1 m² of structure are specified in Table 7. The consumption rates are given based on partition sizes H=2.75 m; L=4.00 m; S=11 m². The design pitch of the studs is 600 mm.

Table 7

Name	UoM	Partition thickness, mm			
		93	108	133	158
Frame, filling, fasteners					
Gyproc-Standart PN 50/40	m	0.7	0.7	-	-
Gyproc-Standart PN 75/40		-	-	0.7	-
Gyproc-Standart PN 100/40		-	-	-	0.7
Gyproc-Standart PS 50/50		2.0	2.0	-	-
Gyproc-Standart PS 75/50		-	-	2.0	-
Gyproc-Standart PS 100/50		-	-	-	2.0 or
Vibroflex-Wave 100/40		-	-	-	2.0
Vibrostack-M100 tape (30 m roll)	m	2.5	-	-	5.0
ULTRACOUSTIC-LENTA F100 tape (15 m roll)	m	1.25	2.5	2.5	2.5
Vibrostack-M150 tape (30 m roll)	m	2.5	2.5	2.5	-
Dowel-nail	pcs.	1.6			
Shumanet-BM/Shumanet-ECO/Shumanet-SK Neo (1200x600x50/1250x600x50 mm board) sound-absorbing plate	sq. m	1.0	1.0	-	2.0
Shumanet-BM sound-absorbing plate (1200x600x70 mm board)		-	-	1.0	-
Sheathing					
Soundline-dB panel (1200x1200x16.5 mm)	sq. m	-	2.0		
Gyproc AKU-line/AKU-line PRO panel (1200x2500x12.5/1200x2000x12.5 mm)		-	2.0		
Composite finish board	sq. m	2.0	-		
Self-tapping screws for gypsum plasterboards 3.9x30 (MN self-tapping screw or equivalent)	pcs.	20			
Self-tapping screws for gypsum board 3.9x41 (XTN self-tapping screw or equivalent)	pcs.	-	40		
Fixing edge layers, sealing the joints					
Vibroseal vibroacoustic sealant (Tube 290 ml)	pcs.	0.8			
Glue (for fixing the finish layer of Soundline dB-X system sheathing)	kg	As required	-	-	-

